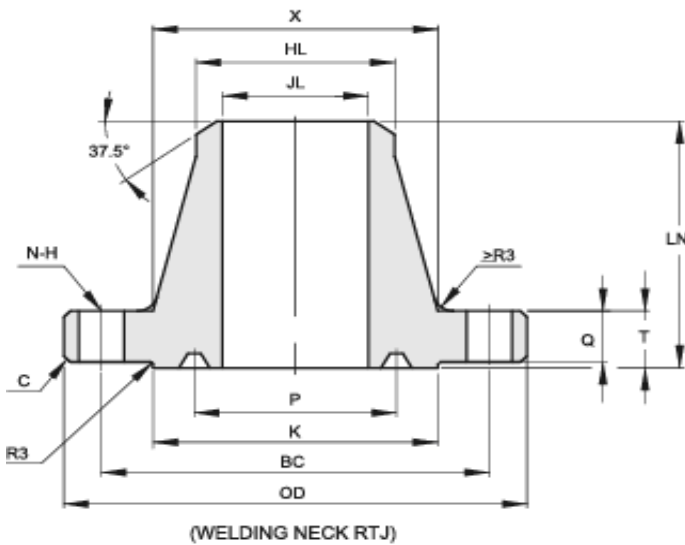
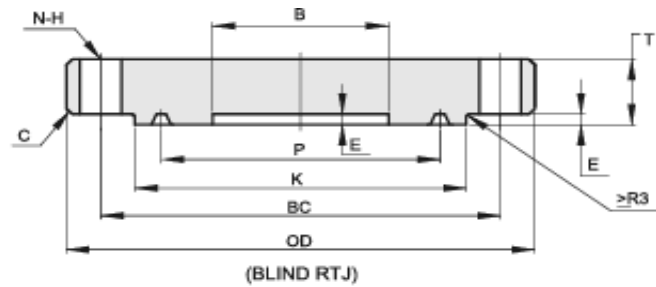


API 6A TYPE 6B 5000 PSI BLIND & WELDING NECK FLANGES



Size	B	OD	C	K	P	E	T	Q	X	BC	N	H	LN	HL	JL	R/RX
2 1/16"	53.2	215	3	124	95.25	7.9	46.1	38.1	105	165.1	8	26	110	60.3	43.7	24
2 9/16"	65.9	245	3	137	107.95	7.9	49.3	41.3	124	190.5	8	29	113	73	54.9	27
3 1/8"	81.8	265	3	168	136.53	7.9	55.6	47.7	133	203.2	8	32	125	88.9	67.5	35
4 1/16"	108.7	310	3	194	161.93	7.9	62	54	162	241.3	8	35	132	114.3	88.1	39
5 1/8"	131	375	3	229	193.68	7.9	81	73.1	197	292.1	8	42	164	141.3	110.3	44
7 1/16"	181.8	395	6	248	211.15	9.7	92.1	82.6	229	317.5	12	39	181	168.3	132.6	46
9"	229.4	485	6	318	269.88	11	103	92.1	292	393.7	12	45	224	219.1	173.8	50
11"	280.2	585	6	371	323.85	11	119	108	368	482.6	12	51	265	273.1	216.7	54

Note:

1. RING NUMBER R or RX,
2. C should be the max value
3. Tolerance and Ring Gasket according to API 6A-20TH